

## RE: E3/AS1 TIMBER & TIMBER-BASED PRODUCTS ALTERNATIVE SOLUTION COMPLIANCE DOCUMENT

E3/AS1 states that an impervious and easily cleaned surface must extend at least 1.5m from any sanitary item within the following listed areas Kitchen, Toilet, Laundry, and Bathroom this must also include perimeter protection from water ingress.

**All Woodland Lifestyle's Flooring products feature an impervious and easily cleaned surface layer. Our products have been independently tested under the international standard ISO 4760 by NZWTA, and test data is available on request.**

### **Surface Layer**

The surface layer of our flooring is made impervious and easily cleaned through a number of methods including heat-cured melamine, PVC and polyurethane resins. Consult specific product technical statements for further information.

### **Joint System**

Our flooring utilises a number of locking systems including Unilin's [Uniclic system](#) and [I4F's drop-lock technology](#). These locking systems are highly engineered to provide an extremely tight glueless joint that inhibits any ingress of moisture without the need for additional sealing.

To ensure water tightness of the joints of Woodland Lifestyle [Bamboo](#) flooring, it is required to apply [Cllic Seal](#) joint sealer during installation 1.5m around sanitary items in the Kitchen, Toilet, Laundry, and Bathroom.

### **In-Service History**

Woodland Lifestyle's products have been installed in New Zealand homes around sanitary items since the products were first introduced over 8 years ago, and have performed without issue.

### **Perimeter Splash Protection**

To protect the perimeters from moisture ingress our floor installation instructions specify the foam rod and silicon system. This consists of a foam rod and a flexible transparent silicone and provides the necessary resistance to water ingress around the perimeter.

When installed and maintained as per installation/maintenance instructions, Woodland Lifestyle is confident that our products are suitable to be used as an 'alternative solution' and meet E3/AS1 requirements.

Attached are the wet area installation instructions which form the basis of the alternative solution alongside the correct product selection.

Ambrose Hewetson

# Wet area installation document

To comply with NZ building code E3/AS1

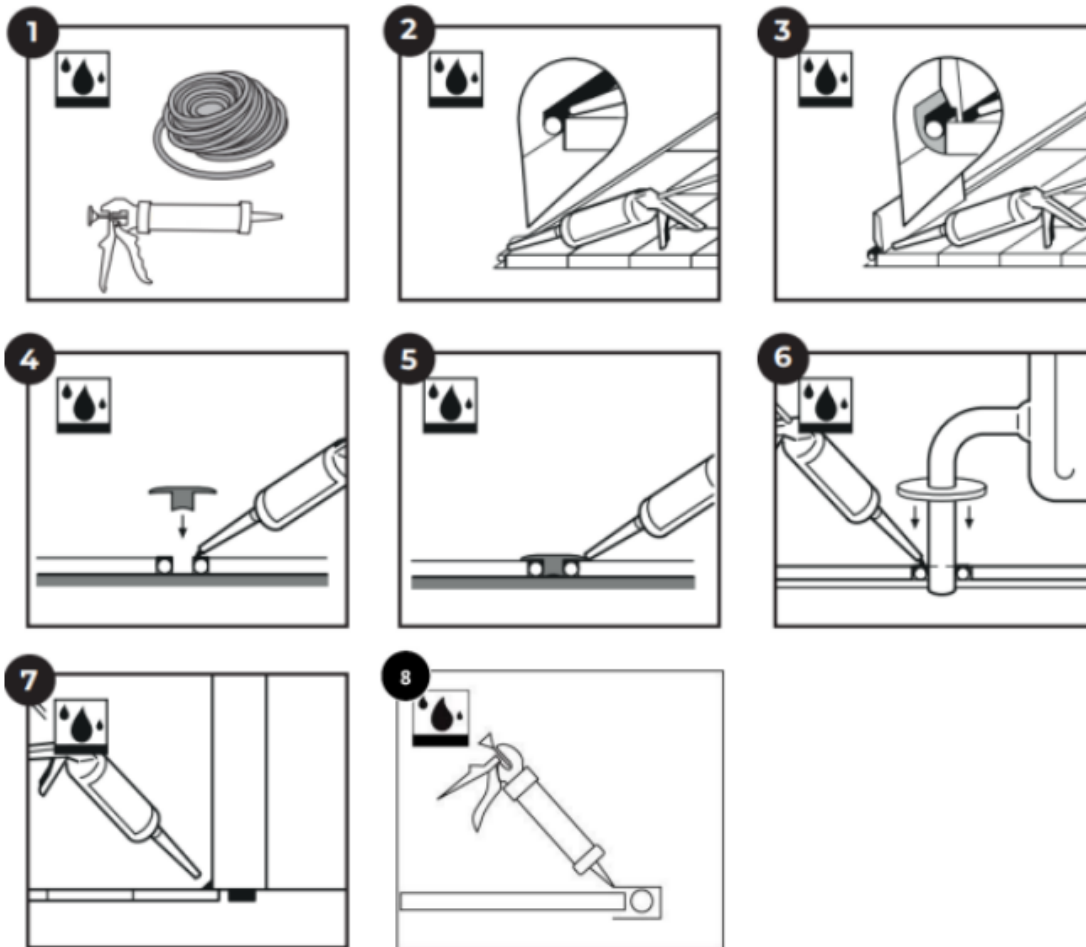
Woodland Lifestyle product range area installation guide.

Product Range	Kitchen	Bathroom	Laundry	Toilet
Balterio Grande Wide	✓	✓	✓	✓
Vitality Style	✓	✓	✓	✓
Euro Deluxe	✓	✓	✓	✓
Oasis	✓	✓	✓	✓
Oasis Wide	✓	✓	✓	✓
Metroflor Genesis	✓	✓	✓	✓
Metroflor Herringbone	✓	✓	✓	✓
Strata Premium Hush	✓	✓	✓	✓
Strata Sentry	✓	✓	✓	✓
Bamboo	✓			

Updated – 01/07/2023

As per NZBC E3/AS1, the below perimeter finishing installation method must extend at least 1.5m from any sanitary fixture or sanitary appliances, including items such as Dishwashers, Wash tubs, washing machines, etc. In enclosed bathrooms, laundries, and toilet facilities, Woodland Lifestyle recommends sealing the complete perimeter of the room.

For flooring ranges where Clic Seal is required (such as Bamboo) apply a generous amount of click seal along the entire joint of each board (including the end joint) during installation in the required area.



1. To protect the perimeters of your floor from water ingress in wet areas a Silicon + Foam rod installation is required, this includes flexible transparent silicon and a PE foam rod.
2. Push the PE foam into 8 – 10mm perimeter expansion gaps, then apply the silicon on a slight angle to the top of the PE foam rod.
3. Install skirting boards and seal the flooring edge of the skirting board with silicone to prevent water ingress.
4. When transition profiles are required install the PE foam rod and silicon in the expansion gap ensuring room is left for the base of the transition profile.



3 Wilson Road, Upper Moutere, 7175, New Zealand

09 308 7948

[sales@woodlandlifestyle.com](mailto:sales@woodlandlifestyle.com)

Updated – 01/07/2023

5. Install the expansion profile covering the expansion gap and PE foam rods. Silicon the edges of the profile to prevent water ingress
6. For a great finish around pipes, use pipe covers. Install the PE foam rod and apply silicon in the expansion space before placing the pipe cover on the floor, silicon the edges of the pipe cover to ensure no water ingress.
7. In areas wet areas where kickboards, wall boards, door jambs etc are present apply silicon to the floor edge of the panels to ensure no water ingress underneath.
8. In areas where edges of laminate are exposed e.g., in dishwasher cavities. Prevent water ingress by covering the ends of the laminate using a C channel with a foam rod inside, silicon the edge of the profile to stop water ingress.