



SEE FLOORING
differently



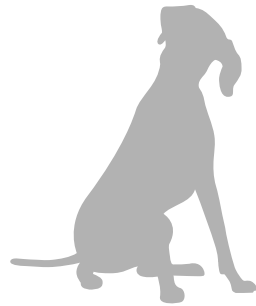
LooseLay Originals

Where classic charm meets modern design



Karndean
Designflooring

Contents



Welcome to our
LooseLay Originals look book

Interior Trends	8
Smooth Operator	10
Timeworn Treasures	13
Firm Foundations	14
Golden Age	17
Our Inspiration.....	18
Hamden	20
Country Oak.....	21
Sicilia	22
Ashland	23
Providence	24
Stamford	25
Heritage Oak	26
Cambridge	27
Vintage Timber	28
Hartford.....	29
Lampione.....	30
Bridgeport	31
Linosa	32
Brockton	33
Danbury.....	34
Waterbury.....	35
Budelli	36
Levanzo.....	37
Tino	38
Capri.....	39
Madison	40
Quebec.....	41
Nisida.....	42
Dakota.....	43
Maine	44
Ontario.....	45
Vulcano.....	46
Utah	47
Colorado.....	48
Vermont.....	49
Environmental	50
Technical Specification	51



Wood

Our LooseLay Originals collection of woods has been inspired by some of the most popular species of wood found in the natural world. Our wood designs reflect the trend for the natural appearance of European Oak, distressed and weathered characteristics of Rustic Oak, contemporary look of Limed Oak and much more. Our LooseLay Originals wood collection has something to complement every interior style.

Stone

Our LooseLay Originals collection of stones replicates the striking appearance of natural stone combined with the flexibility of a broad and on-trend colour palette to complement a wide range of interior styles. This collection of stones inspired by the natural world features minimalistic Concrete, luxurious Honed Limestone and natural Pietra with all the benefits and comfort of luxurious vinyl tiles.



Quebec LLT219
Concrete

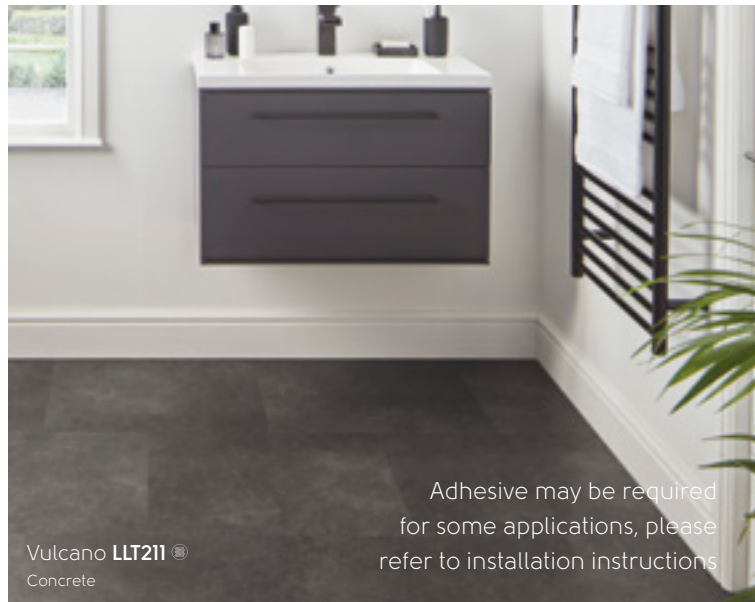
Loose lay



Featuring our K-Wave® friction grip backing that holds the product in place using a combination of weight and friction, our loose lay products require only minimal adhesive.

With our LooseLay Originals range, you can have a loose lay floor with design flexibility and even incorporate multiple colours into one design. You can carry your chosen design throughout the space without the need for transition strips.

This is our most ergonomic flooring option, meaning it provides the most cushioning underfoot.







Adhesive may be required for some applications, please refer to installation instructions

Vulcano LLT211
Concrete



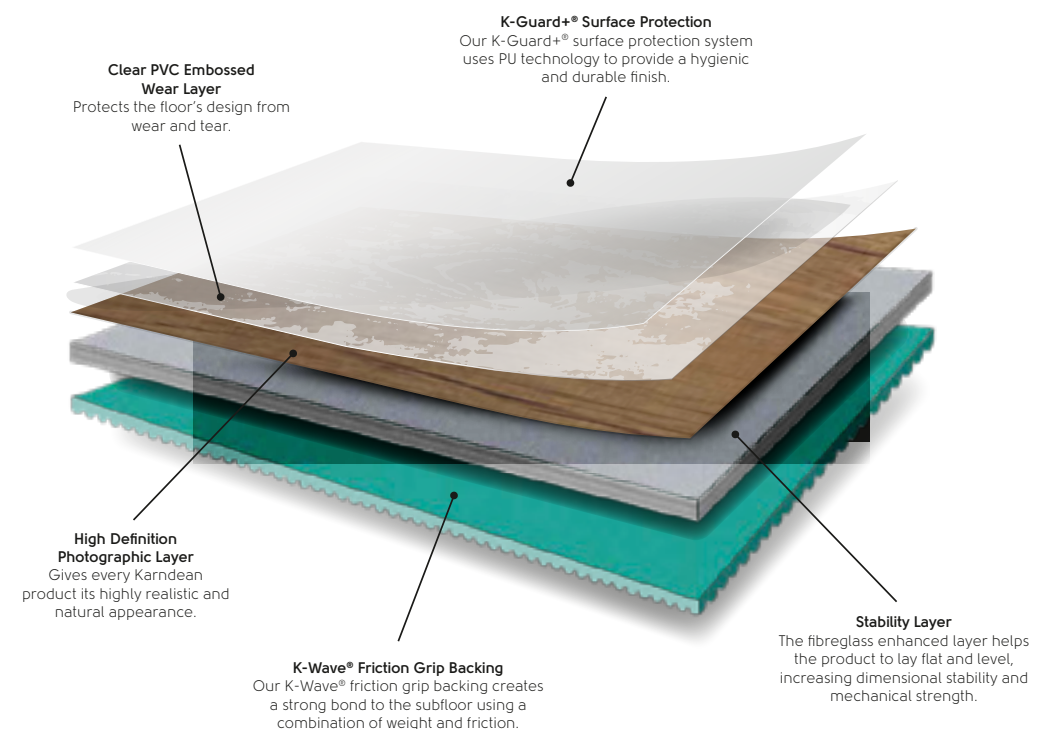
Bridgeport LLP157
European Oak

Why would you want a loose lay floor?

-  **Individually replaceable:** Should you need to replace a piece, simply lift the damaged plank or tile and replace with a new one.
-  **Quick and easy to install:** Our loose lay ranges can be fitted over most existing hard floors.
-  **Reduces noise transfer:** Our loose lay ranges are perfect for projects where you want to reduce noise levels in the room below.
-  **K-Wave® friction grip backing:** Our friction grip backing creates a strong bond to the subfloor.



What's great about loose lay not being fully adhered to your subfloor is that if you need to replace an individual plank or tile, it's quick and easy to do so!



Interior trends

Home as a sanctuary

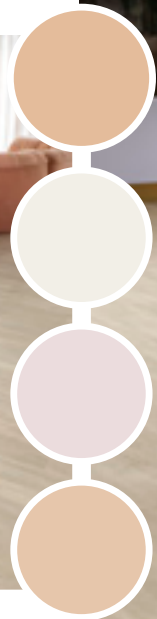
Redefining the way we live

Over recent years, the disruption of the global pandemic has only added to a growing sensory overload of modern living. In response, we see that people are seeking a life that's more authentic, simpler and closer to nature. At Karndean Designflooring we set out to understand what that means in design trends. While we identified four clear and different directions in interior styling, they share a common heart: the home as a sanctuary.

When the world stayed at home, it made us rethink our 'four walls'. 'Home' has always been our private retreat from the world, but now more than ever it has become our sanctuary - a place of personal comfort, nurturing and cocooning. For many, home also became a place for working, for homeschooling and the place where we found our entertainment and explored new interests. This multi-purposing of our living spaces is another key driver of the emerging design trends that deliver practical and versatile functionality while never compromising on comfort or style.



Focus on style



Smooth Operator

Pared-back palettes layer mono-colour shades and therapeutic tones over clean interior lines.

While drawing heavily on a retro aesthetic, Smooth Operator is as fresh as tomorrow. It perfectly balances the current yearning for newness with the reassurance of the familiar.

Classical touches such as arches and bespoke built-in furniture set a luxurious scene. Monumental materials like stone and concrete are made soft, and timber becomes fluid as sinuous, sensual curves deliver both visual and physical comfort and reassurance.



Lampione **LLP147**
European Oak



Also works with...



Bridgeport
LLP157
European Oak



Tino
LLT208
Honed Limestone

Lampione **LLP147**
European Oak

Also works with...



Stamford
LLP109
Rustic Oak

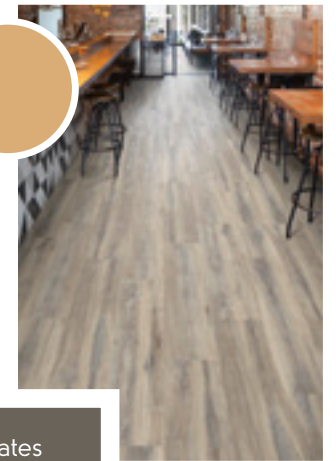


Hartford
LLP112
Rustic Oak



Sicilia LLP142
Character Oak

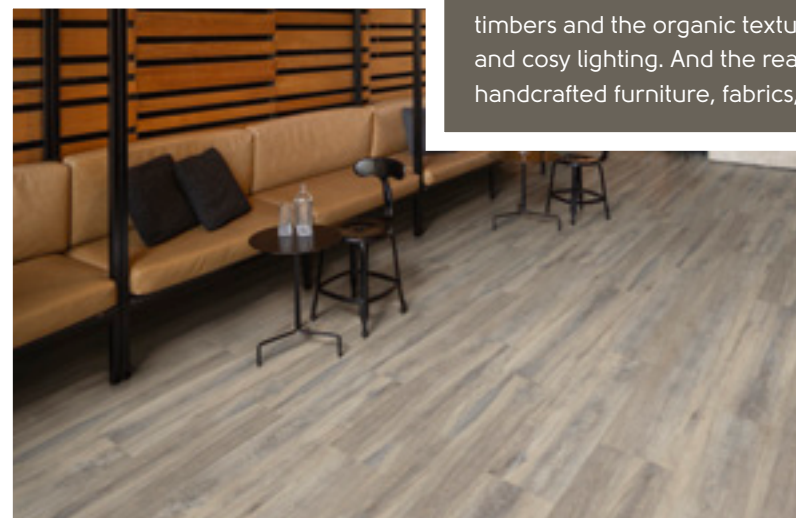
Focus on style



Timeworn
Treasures

With no compromise to comfort or style, Timeworn celebrates the imperfections and imperfect character of natural materials.

Timeworn Treasures is an antidote to the fast pace and overstimulation of modern life along with its ever-changing fashions and endless consumer choices. Think raw-edged timbers and the organic textures of stone. Luxurious leathers and cosy lighting. And the reassuring artisan's touch of handcrafted furniture, fabrics, ceramics and art.



Sicilia LLP142
Character Oak



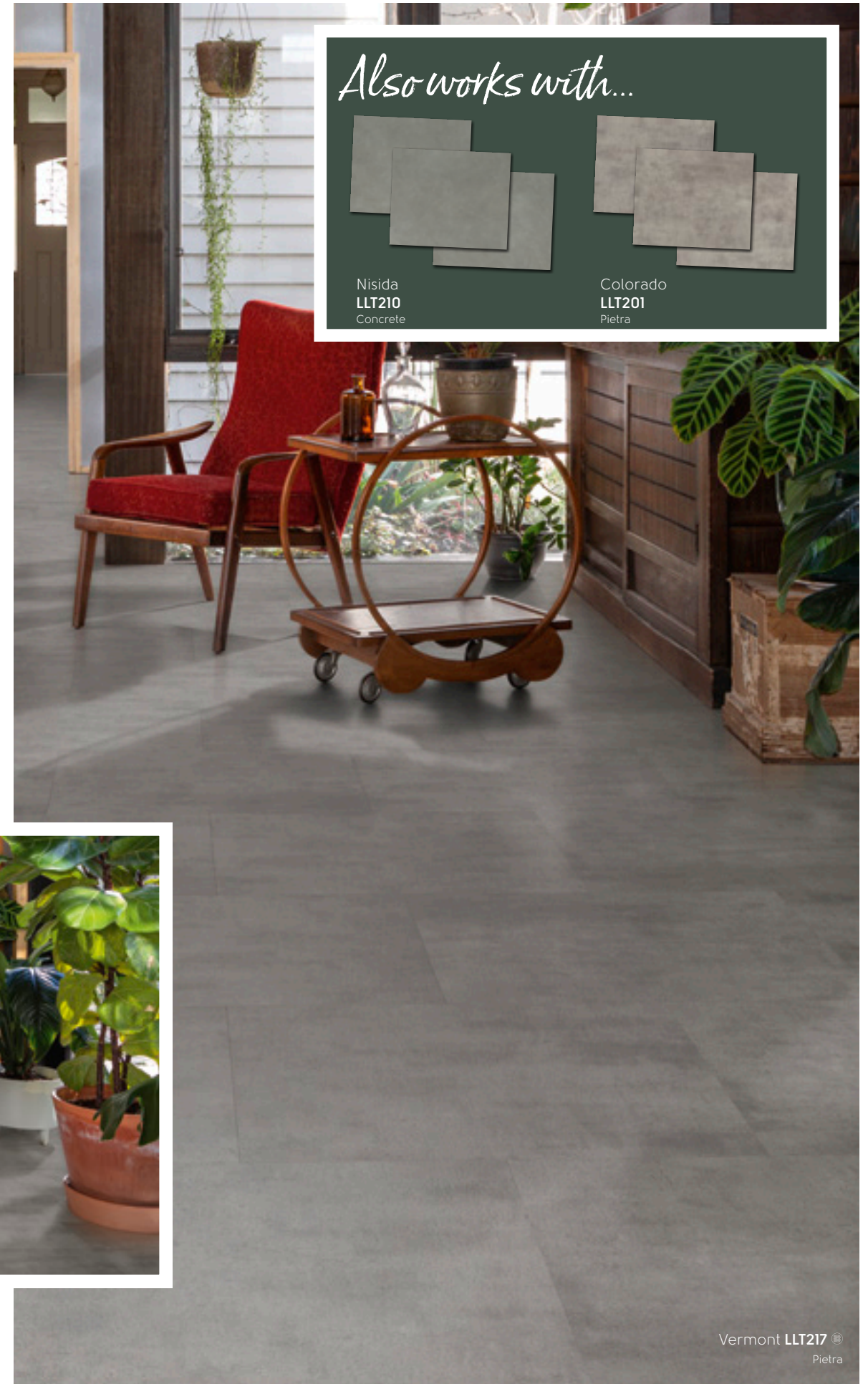
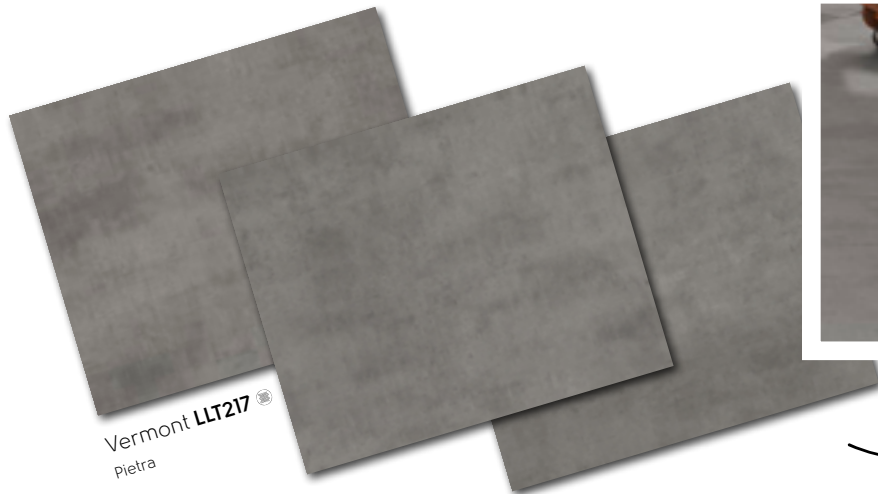
Focus on style

Firm Foundations

Firm Foundations combines the strength and resilience of nature with a raw-edged and utilitarian industrial vibe.

Firm Foundations is a timeless design direction that delivers just that. While this look is all about dependable function and practicality, it's also uncompromising in bringing understated elegance and comfort to contemporary living spaces.

Think dark timbers, exposed brick, polished concrete and terrazzo. Think modern statement furniture and a moody dark palette with bursts of colour that provide a backdrop for optimism and a comfortable life of luxury.



Also works with...



Nisida
LLT210
Concrete



Colorado
LLT201
Pietra

Vermont LLT217
Pietra

Also works with...



Capri
LLT209
Honed Limestone



Providence
LLP108
White Oak

Focus on style



Golden Age



In a time of change and uncertainty, the Golden Age palette taps into the comfort of the familiar. Organic colours of the earth, timbers and natural fibres bring the grounding and nourishing power of nature into the home.

The Golden Age is all about interiors that spark joy and a closer connection to nature. As we reconnect to the things that matter most, an organic palette, materials inspired by nature, and the artisan's hand in furniture and furnishings come together in wholesome, energising and artful interiors. Bring a comforting glow to interior spaces all year round.



Hamden LLP156
Character Oak

This design has been achieved by laying the planks in a herringbone pattern.

Hamden LLP156
Character Oak

Our inspiration

Where we sourced our inspiration

The LooseLay Originals range features a collection of 18 wood and 12 stone looks in a versatile colour palette that complements a wide range of interior styles.

White Oak

In its native forests of North America, the White Oak is celebrated as one of the USA's most distinguished trees. The distinctive grains, subtle textures and light colourings of White Oak are valued by designers and homemakers seeking to introduce natural tones and classic lines to their interiors.



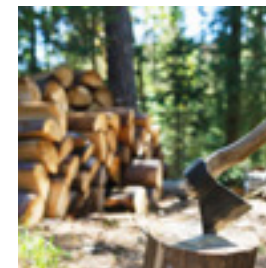
Limed Oak

Traditionally in Northern Europe, oak floorboards were washed with caustic lime to help preserve the timbers and protect them from bugs. Over time, the distinctive chalky wash of residual lime on the oak came to be more appreciated for its beauty than its protective qualities. Today, the lime-washed look is still central to the Scandi-style but is also seen within a wide range of interior style across the world.



Character Oak

Character Oak traditionally refers to the quirky and natural characteristics that make oak so popular. Our designers have captured all the distinctive, naturally occurring colour variations.



Rustic Oak

Our Rustic Oak collection provides the perfect flooring solution for this relaxed approach to interior styling. Inspired by a range of oak species, our collection of luxury vinyl planks capture more of the imperfections that give these rustic timbers their distinctive and individual charm.



European Oak

From the palaces of Northern Europe to the chateaux of France, European Oak has been a traditional and luxurious flooring choice for centuries. In the Quercus or Oak genus, there are over 500 different species. European Oak is a description that covers several valued oak species that grow in the forests that still cover around 35% of Europe's land area.



Pietra

In Italian, 'Pietra' means stone. The monolithic style of Pietra has long been a favourite of innovative architects and is considered a minimalist's dream. Increasingly popular with a wide range of architectural and interior styles, our Pietra collection captures the subtle patterning, textures and strength of stone in our luxury vinyl floor tiles.



Honed Limestone

Our Honed Limestone collection captures the timeless beauty of limestone in a versatile range of luxury vinyl floor tiles. It's an elegant solution for bringing the classic style and sophistication of limestone to any interior at a fraction of the cost and effort.



Concrete

Once the favoured finish of avant-garde architects and experimental designers, concrete today is a shining star throughout the world of design. It's a material of many moods – playing it cool in hard-edged contemporary design or bringing a surprising warmth, fluidity and character to a range of interior styles.





Hamden LLP156®
Character Oak

This design has been achieved by laying the planks in a herringbone pattern.



Country Oak LLP92®
Character Oak



Sicilia LLP142 ©
Character Oak



Ashland LLP95 ©
White Oak





Heritage Oak LLP102 ©
Rustic Oak



Cambridge LLP113 ©
Rustic Oak













Tino LLT208
Honed Limestone



Capri LLT209
Honed Limestone



Madison LLT203 ©
Honed Limestone

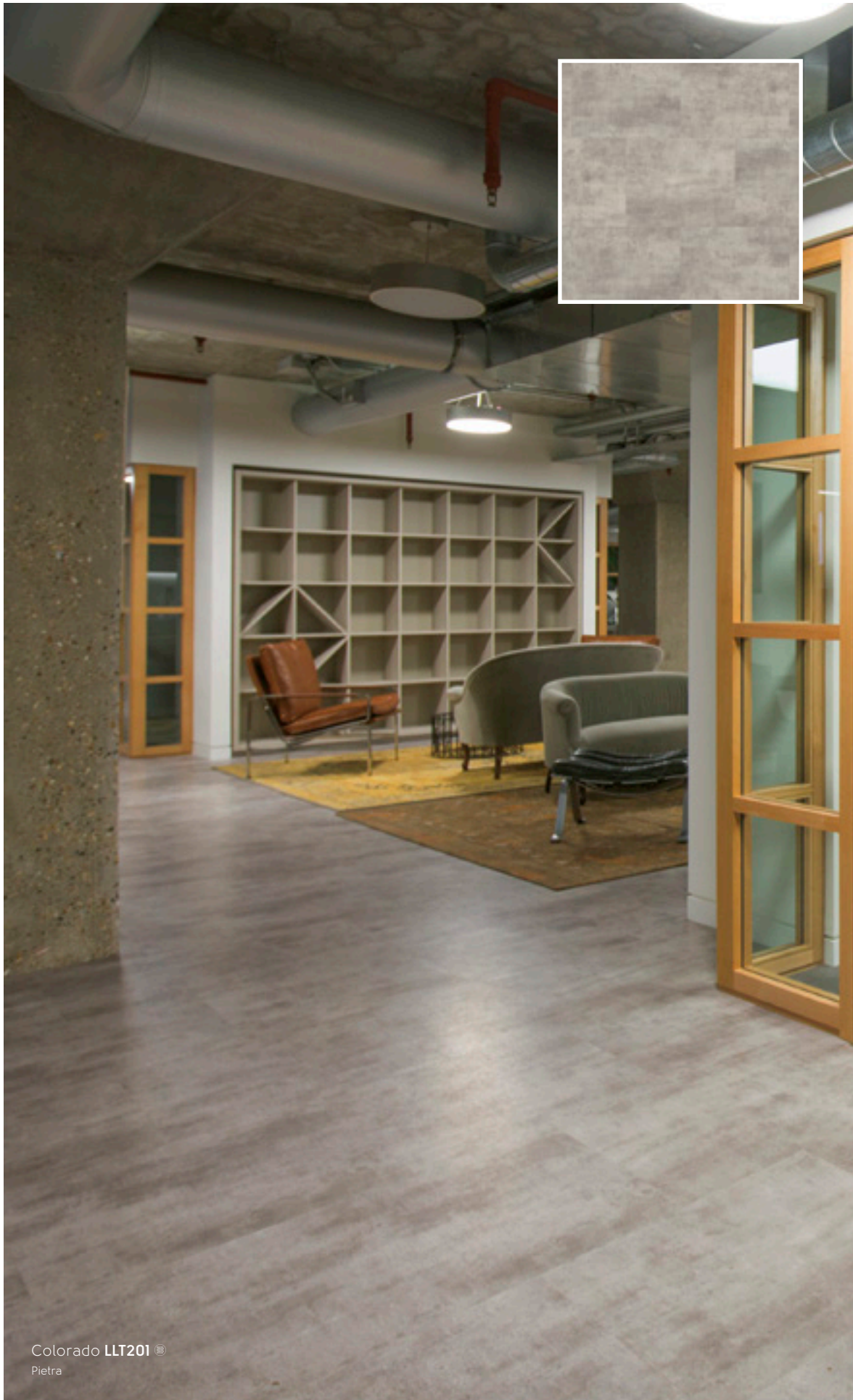


Quebec LLT219 ©
Concrete









Colorado LTT201
Pietra



Vermont LTT217
Pietra

Environmental

Karndean Designflooring and the environment

At Karndean Designflooring we find inspiration for our products in the beauty of the natural world and feel passionate about bringing this into every product we create. In order to keep our environment protected we do everything we can to continuously improve our manufacturing processes to ensure sustainability whilst delivering best value. We have always aimed to make stylish and durable floors with the lowest possible impact on the environment, and have never had to compromise quality or performance in order to comply with legislation or meet environmental requirements.

Karndean Designflooring is a member of the Green Building Councils of Australia and New Zealand and complies with their requirements under GreenStar. All Karndean products and accessories are manufactured in facilities certified to the ISO 14001 Environmental Management and ISO 9001 Quality Management International Standards. Our approach is based on the use of recycled materials in our floor coverings and ensuring that the finished product is suitable for recycling if required.

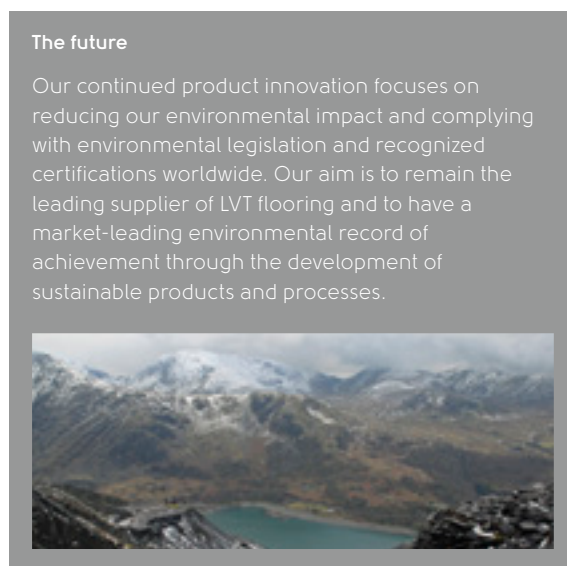
What's more...

- All of our packaging is made using recycled material, which we continually review to ensure that it is environmentally friendly and fit for purpose
- We use individual logistical solutions to efficiently and effectively transport our products
- Our storage facilities use high density racking to maximise capacity and minimise impact
- Our offices are introducing innovative energy saving techniques
- We are members of the Green Building Council Australia (GBCA) and Green Building Council New Zealand (NZGBC)
- Our products qualify for eco-points towards GreenStar building projects
- All of our adhesives are water based, solvent-free, have low VOC emissions and are GreenTag certified

GreenStar GreenTag™ certified

The majority of Karndean luxury vinyl ranges are fully certified to Global GreenTag, the third party multi-criteria, consensus based and externally verified Type 1 eco-labelling program. This is one of the largest product sustainability certification systems in Australasia and the only certification mark approved by the Australian Competition and Consumer Commission (ACCC).

GreenTag comprises two certification systems and the majority of Karndean Designflooring luxury vinyl is certified under both.



The future

Our continued product innovation focuses on reducing our environmental impact and complying with environmental legislation and recognized certifications worldwide. Our aim is to remain the leading supplier of LVT flooring and to have a market-leading environmental record of achievement through the development of sustainable products and processes.

LCARate™

Life Cycle Analysis is for all products and all rating tools that engage LCA with separate output called an Environmental Product Declaration (EPD), which is a summary LCA report used for certain credits in some rating tools for GreenStar.

GreenRate™

GreenRate is a straight Type 1 eco label developed to meet the requirements of specific green building rating tools. It includes indoor environmental air quality: volatile organic compounds compliant (IEQ VOC) and reduced exposure to pollutants. GreenRate is offered in three levels of quality from Level 'C' up to Level 'A' relevant to GreenStar in Australia and New Zealand.

Karndean Designflooring LVT ranges and adhesives are fully certified under GreenStar GreenRate Level 'A', plus under international FloorScore Indoor Air Quality Certification for low emitting VOC's. Also certified to LCARate "silver streamline".

Learn more and download Karndean Designflooring's GreenTag certificates on our website.

Visit karndean.com/eco.

Technical Specification

	Standard	Result
Box quantity		Wood: 12 Planks / 3.150 m ² Stone: 10 Tiles / 3.050 m ²
Size	ISO 24342	Wood: 1050.0 mm x 250.0 mm Stone: 500.0 mm x 610.0 mm
Thickness	ISO 24346	4.5 mm
Wear layer	ISO 24340	0.5 mm
Surface treatment		K-Guard+® PU coating
Backing		PVC Friction Pad
Warranty¹	Commercial Domestic	15 years wear Lifetime wear
Bevelled edge		No
Standards	ASTM F1700	Pass
Classification	ISO 10874 - Commercial ISO 10874 - Domestic	33: Commercial heavy 23: Domestic heavy
Reaction to fire	AS/NZS ISO 9239.1:2003	CRF: 8.3 kW/m ² Smoke Value: 143% min
Staining resistance	EN ISO 26987/EN 423 ASTM F925	Excellent Pass
Light fastness	ISO 105-B02 ASTM F1515	Pass (≥7) Pass (<8)
Abrasion resistance	EN 649 ISO 10582 ASTM D3884	Group T Type 1 Pass
Flexibility	ISO 24344	Pass
Dimensional stability	EN 434/ISO 23999 ASTM F2199	Pass (≤0.10%) Pass
	ISO 140-8 Improved Impact Sound Insulation	ΔL _w = 14 dB IIC 56 dB
Acoustic impact noise reduction	ASTM E492-09 Impact Insulation Class	Suitable for use on upper floors of residential high-rise apartment buildings without the need for a separate acoustic underlay under certain build specifications – precise details available from Karndean. NCC 2016 F5.3 (a) result refer to Karndean INSUL Marshall Day Software report for your MULTI Res specification including AAAC Star rating
Electrical behaviour body voltage	EN 1815 AATCC 134-1996	Pass Pass
Indentation – residual	EN 433/ISO 24343-1 ASTM F1914	Pass (≤0.1 mm) Pass (<8%)
Castor chair continuous use	EN 425/ISO 4918	Pass
Thermal resistance	ISO 8302	0.0245 m ² K/W Suitable for underfloor heating. Max 27°C
Slip resistance²	AS/NZS 4586:2013	Wood: R10 Stone: R9
Adhesive		Karndean Hi-Tack PS Adhesive when applicable; please refer to our installation instructions.
	GBCA/NZGBC GreenStar Rating System	GreenTag Level 'A'; LCA Silver Plus;
	Floorscore SCS-EC10.3-2014 v4.0	Indoor air quality certified; Compliant low emitting VOC emissions.
Environmental	Indoor Air Comfort	Gold certification Compliant low emitting VOC emissions.
	Environmental Product Declaration	Product-specific Type III EPD (products with external third-party verification)
	NSF/ANSI 332	Sustainability Assessment for Resilient Floor Coverings; Silver certified product
Recycling		Suitable
Phthalate free		Yes

¹ Subject to terms. Please see our website.

² Slip resistance is measured on freestanding ex-factory product. Slip resistance can be affected by many factors, including but not limited to; product installation and underlayment, surface contamination, use, wear and how the product is maintained. Textural variation along the surface of the product can affect nominal values.



Scan to read about our Environmental Commitment



Imagery and Design Reproduction

Photography and print cannot always produce a perfect representation of our products. This includes colour, pattern variation and installation elements used. For this reason we strongly recommend obtaining a product sample and where possible viewing a larger sample in-store. We also recommend visiting our website for information on installation, after care and product selection: www.karndean.com/advice. We love developing new ideas and improving on our existing designs which means that sometimes products are withdrawn at short notice. We hate to disappoint and will work with you to find an alternative design. Please contact Customer Service for more information.

Contact us

Phone: AUS - 1800 331 170* / NZ - 0800 442 101*

Email: customerservice@karndean.com.au
customerservice@karndean.co.nz

Web: www.karndean.com

Address: 835 Stud Road Knoxfield,
Victoria 3180, Australia

*Calls may be recorded for training and quality purposes.

