

PERGO®

ORIGINAL LAMINATE

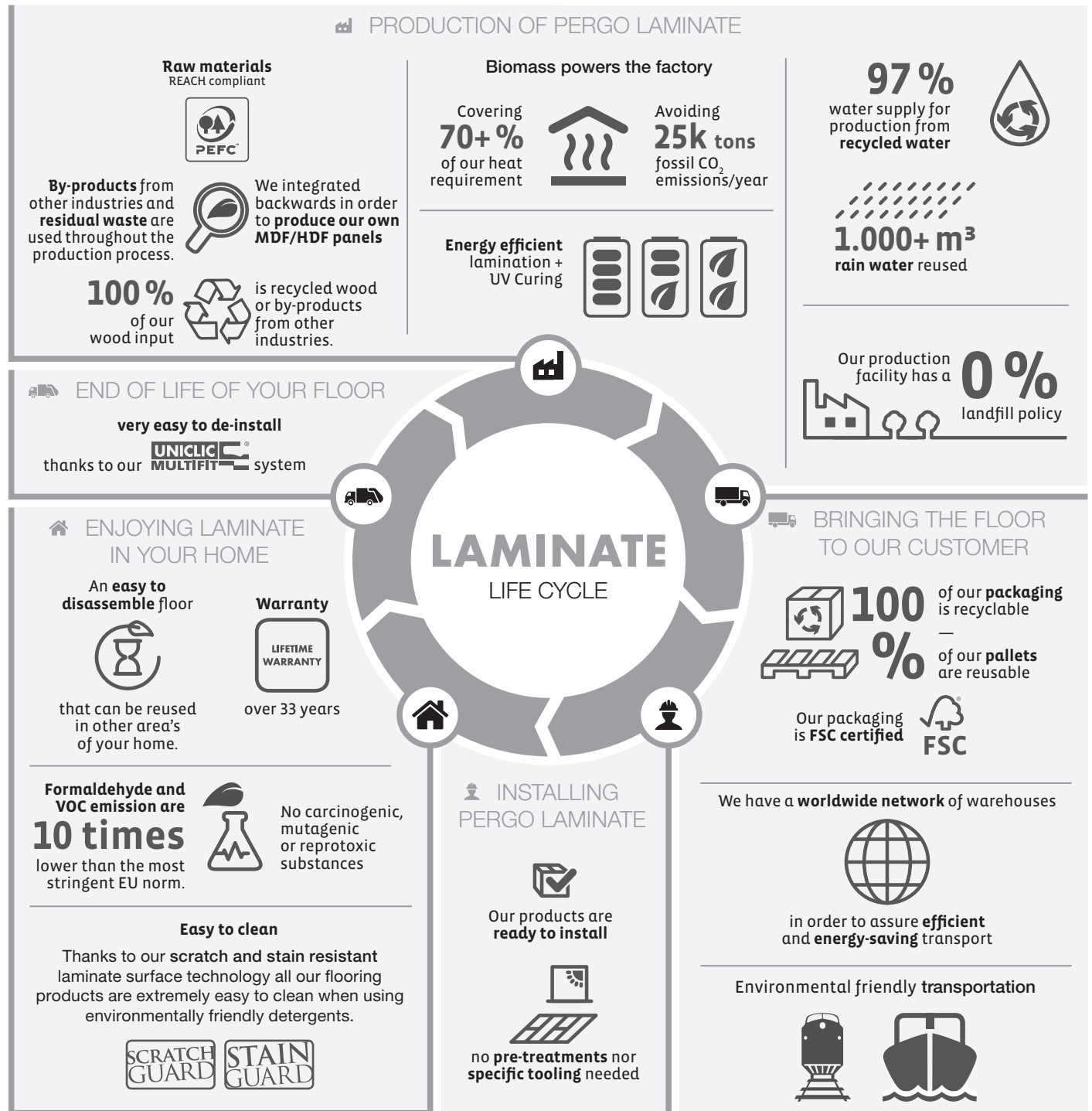
Pergo Laminate, a sustainability story

A heart for nature: At Unilin we are conscious that the world in which you want to live doesn't consist of just stylish interiors. It is equally a world that radiates respect for our natural environment. That is precisely why we continually do our best to keep the environmental impact of our products and processes to a minimum.

Claims:

- We use carefully screened raw materials
- We invest in energy-efficient production
- We comply with all regulations (and beyond)

We realize that the world you'd love to live in is not just a world of stylish interiors. It's also a world that shows respect for our natural environment. That's why, as a company, we make continuous efforts to minimize the ecological impacts of our products and processes. Every day, we seek new ways to recycle, reduce and renew throughout the entire laminate manufacturing process. Because of that we developed a product life cycle in order for you to gain deeper understanding of our efforts in terms of sustainable product development and to show you how we stay true to our claims.



Production of Laminate flooring

When talking about sustainability we are thinking of responsible sourcing. One aspect of that are our efforts in implementing renewable energy resources while striving for energy efficiency. But when we take sustainability to the source there are even more aspects that we take responsibility for.

Raw materials

To manufacture laminate you need High-Density Fiberboards (HDF). These boards are made from softwood fibers that are broken down, mixed with wax and a resin binder to then be formed into panels using heat and pressure. The important differentiator compared to competitors is that we make our own HDF in order to control the whole process of raw materials that is used to produce them. Because of that we were able to make our fiberboards out of 100% recycled wood. This wood consists of byproducts coming from small and curved trees and so-called residual waste coming from other industries. That's our way to guaranty a constant supply of qualitative and sustainable sourced fiberboards. Because of that are products are able to carry the certificate which is the only reliable label for customers that guarantees wood streams within the company to be fully monitored and controlled in terms of sustainability.

Powering the factory

As most production processes, manufacturing LMP requires energy. However, at Unilin we are heavily investing in energy efficient technologies resulting in a significant reduction of energy consumption and making our energy greener.

Thanks to the implementation of an internal biomass plant we're able to produce laminate in an environmentally

friendly way by producing green electricity. We achieve to convert over 170.000m³ of wood waste on a yearly basis that cannot be recovered as raw material for panel production into electricity for around 51.000 families. All of the green energy that we're not using for our production facilities is sold.

The biomass energy plant is covering more than 70% of the heat requirement of the production plant, reducing our CO2 emissions with 25.000 tons per year.

Furthermore, we seek for energy efficient production methods, resulting in a lamination process of the different layers of our laminate that requires considerably less energy than traditional lamination technologies. We've also implemented a modern UV curing system where instead of working with energy absorbing hot air ovens to cure our top coating, we use environmental friendly ultraviolet light and thus minimize the heat requirements.

Water supply and waste management

Water used on site is mainly for heating and cooling purposes during the manufacturing process. The management and protection of water resources is one of the cornerstones of environmental protection globally. At Unilin we're well aware of this situation and therefore, we've taken several actions to reduce our water use during production and to avoid wastewater at any time. Accordingly, we can claim that 97% of our water supply for production is collected from internally recycled water. Furthermore, +1000m³ rainwater is reused.

Not only do we avoid wastewater, thanks to our optimized recycling process by which 100% of the production waste is recycled, we also eliminate production waste on site. Accordingly, we guarantee that our production facility does not sent any waste to landfills.



Bringing the floor to our customer

Packaging

Transporting the product in a green and environmentally friendly way, starts with the packaging of the product. The laminate packaging is entirely made of recyclable material. Because the packaging is 100% recyclable it carries the FSC label. FSC stands for Forest Stewardship Council, a non-profit organization that strives for sustainable forest management worldwide. On top of that the laminate carrying pallets, used for easy transportation, are 100% reusable as well.

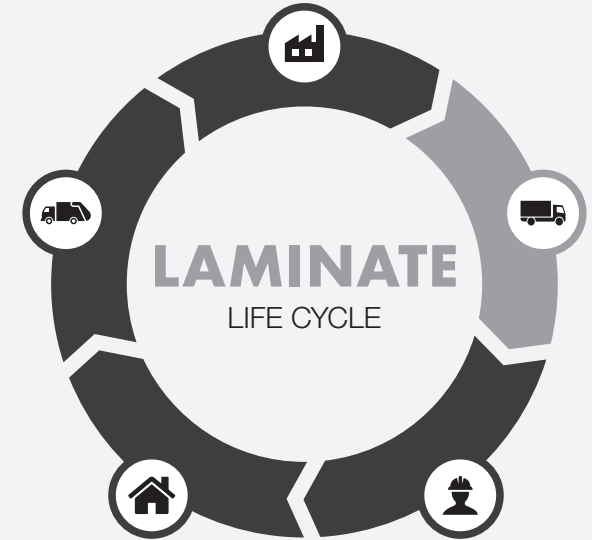
Distribution network

Our worldwide network of warehouses, handling a wide range of Pergo and Pergo products, allows us to have shorter supply lines to feed local markets. Having warehouses and distribution centers in Belgium, United Kingdom, Sweden, France, Poland, Ukraine, Russia and the US we are able to combine product transport and avoid the need for suboptimized transport. This led us to reduce and control our ecological footprint.

Alternative transportation methods

Trucks are a carbon-intense mode of freight transport that why we want the supply of 3 million m² laminate flooring per year by shipment to increase with up to 50%, next to road transport. For that reason we created a transport corridor via the River Terminal Wielsbeke, to the harbors of Antwerp (Belgium) and Malmö (Sweden). Next to inland river bound terminals, we are also investing in intermodal freight transportation where 2 modes of freight, truck and rail, are used to deliver laminate in markets outside Belgium. Alternatively we make use of short sea shipping to Scandinavia and Russia by cargo coasters.

PERGO®



Enjoying Laminate in your home

Installing laminate

Installing laminate is a very fast and easy process. Our products don't need to be pre-treated and are immediately ready to install. They can be cut easily with a jig saw. No further specific tooling is needed. Contrary to the messy, expensive and time-consuming installation of ceramics for example, our laminate can be installed without a hassle and installation waste is reduced to a minimum.

Extremely low voc's and no harmful substances

Choosing for laminate is choosing for a healthy floor, since we challenge the most stringent norms of the European Union when it comes to use of formaldehyde and the emission of Volatile Organic Compounds (known as VOC's). Where competitors are buying their resin binder from external parties, we at Unilin are producing our own resin binder in order to control and monitor the right amount of substances. Doing that allows us not only to comply to the European Norm, but to challenge them by producing a resin that is using 10 times less formaldehyde than the most stringent EU-norm. The same holds for the amount of VOC's that affect the indoor air quality. With respect to the latter we accomplished to produce laminate that releases 10 times less VOC's than the most recent EU-norms. Furthermore, our products do not contain carcinogenic, mutagenic, reprotoxic substances class 1A and 1B (candidate list) nor harmful plasticizers.

Hygienic

A durable surface layer, reinforced with aluminium oxide, is one of the major features that make our laminate flooring perfect for intensively used rooms and spaces. On top of that our innovative developments has led to perfectly seal both the surface and the joints to prevent water and dirt from affecting the floor. Bacteria have no time to settle since they can just be wiped off the floor. As a consequence, laminate flooring does not require aggressive cleaning agents.

End of life of your floor

The easy Uniclic / Multifit click system enables you not only to install your floor hassle free, but also to de-install the floor very easily. That is especially interesting when knowing that the warranty on our laminate flooring category can go up to 33 years. Because of that it is convenient for a home-owner to de-installing a floor and re-use it in another area.

At the end of life of your floor, flooring waste can be recycled to new flooring, depending on your local situation. Please contact your local retailer/waste recycling facility to find out the recycling programs in your region.

PERGO®

